

Endemic and Exotic Plants and Birds in Japanese Art



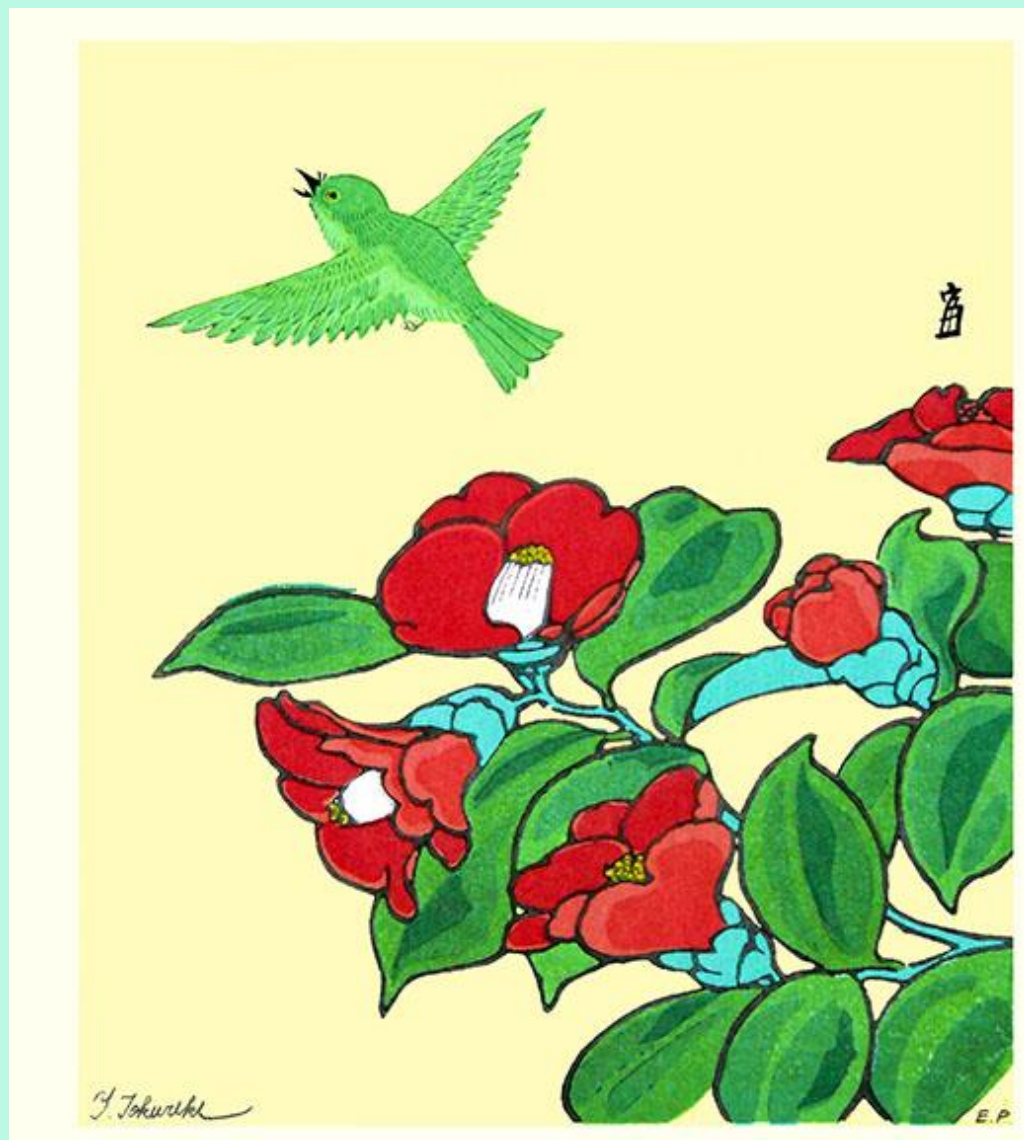
Exotics
→



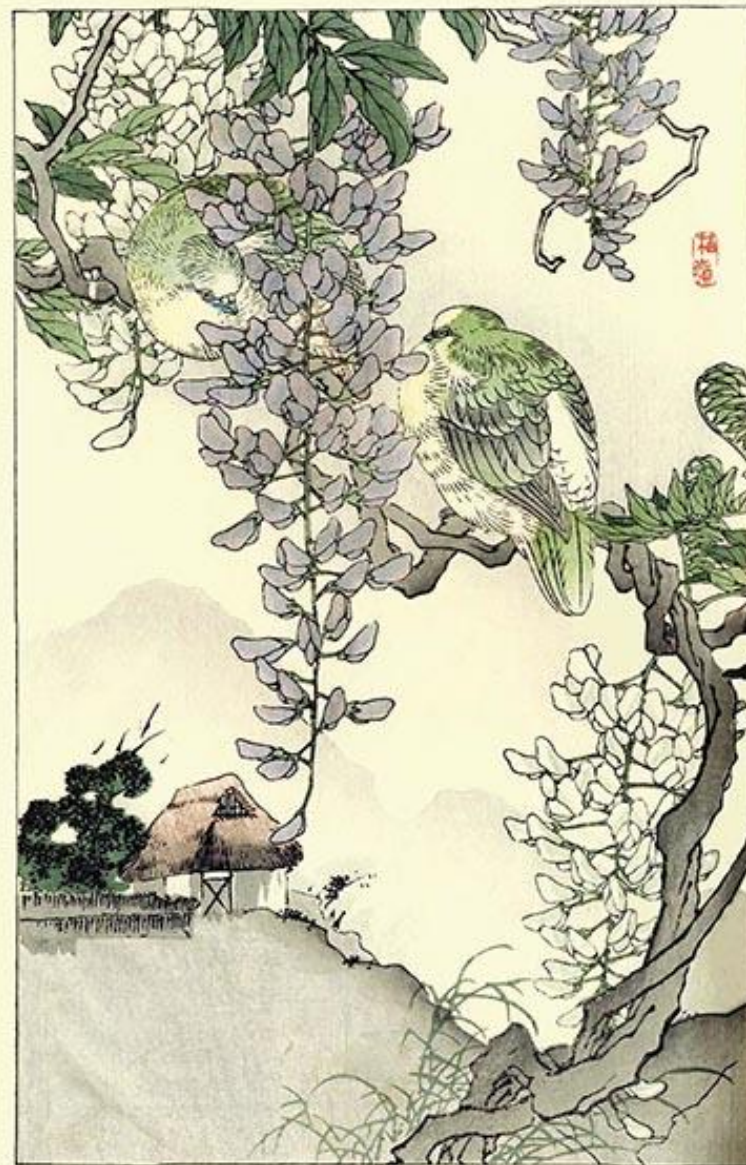
Introduction

Many different species of plants and birds appear in Japanese art. Some of these species occur naturally only *within* Japan (i.e., endemics) while others occur naturally only *outside* Japan (i.e., exotics). The islands of Japan are particularly rich in endemics, presumably because the surrounding ocean prevents species with poor dispersal ability from leaving the islands. Humans have aided the dispersal of other species not naturally found in Japan by bringing them to Japan as a source of food or entertainment (e.g., plants for crops or gardens and birds for pets). The exotics and endemics depicted most often in Japanese art are included in this virtual exhibition. Examples of endemic plants and birds are presented first (pictures 1-20) followed by exotic plants and birds (pictures 21-40). Species are arranged in descending order of their popularity with artists. These examples were chosen from the flower-and-bird prints in the Reader Collection of Japanese Art. For each print the following information is provided: names of the plant or bird and artist, printing method and print size.

Endemic plant 1 – Camellia (*Camellia japonica*) by Tomikichirō Tokuriki, woodblock print, 270 x 295 mm



Endemic plant 2 – Japanese wisteria (*Wisteria floribunda*) by Bairei Kōno, woodblock print, 245 x 370 mm



Endemic plant 3 – *Sasanqua camellia* (*Camellia sasanqua*) by Sūgakudō Nakayama, woodblock print, 245 x 365 mm



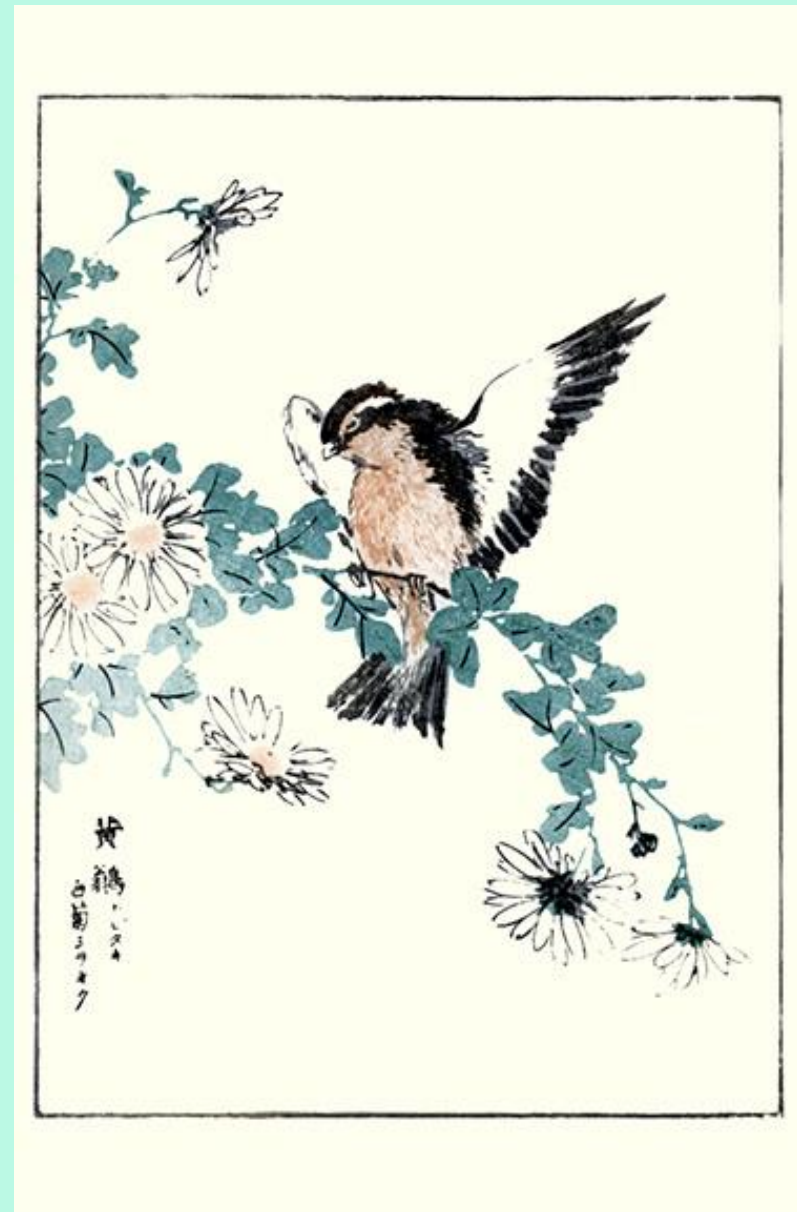
Endemic plant 4 – Satsuki azalea (*Rhododendron indicum*) by Kōyō Nakagawa, woodblock print, 245 x 350 mm



Endemic plant 5 – Bigleaf hydrangea (*Hydrangea macrophyllum*) by Keinen Imao, woodblock print, 250 x 370 mm



Endemic plant 6 – Chrysanthemum (*Chrysanthemum makinoi*) by Kashū Numata, woodblock print, 175 x 245 mm



Endemic plant 7 – Japanese chestnut (*Castanea crenata*) by Shizuo Ashikaga, woodblock print, 300 x 450 mm



Endemic plant 8 – Torch azalea (*Rhododendron kaempferi*) by Shizuo Ashikaga, woodblock print, 300 x 450 mm



Endemic plant 9 – Trumpet lily (*Lilium longiflorum*)
by Baisou Okada, woodblock print, 105 x 155 mm



Endemic plant 10 – Japanese stewartia (*Stewartia pseudocamellia*) by Bunrei Maekawa, woodblock print, 245 x 355 mm



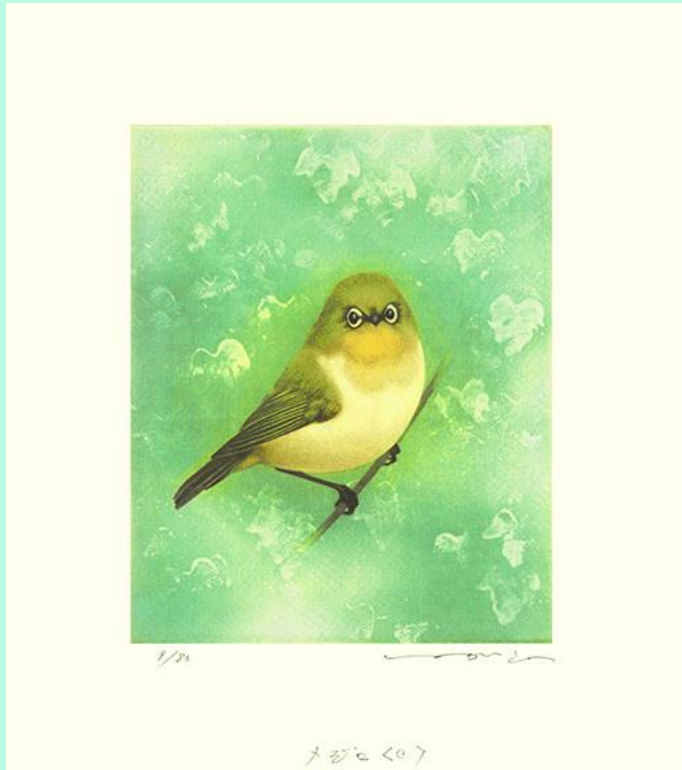
Endemic bird 1 – Japanese bush-warbler (*Cettia diphone*) by Koson Ohara, woodblock print, 130 x 255 mm



Endemic bird 2 – Japanese quail (*Coturnix japonica*) by Chikudō Kishi, woodblock print, 240 x 345 mm



Endemic bird 3 – Japanese white-eye
(*Zosterops japonicus*) by Hidetaka
Yamanaka, intaglio print, 205 x 235 mm



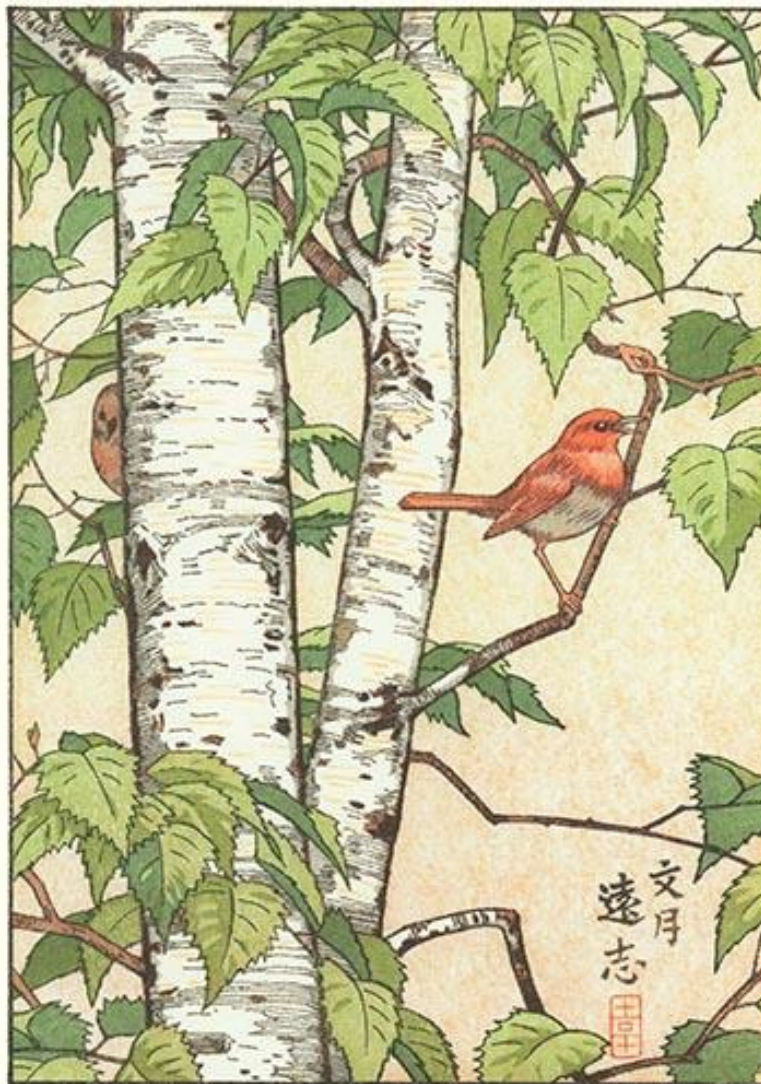
Endemic bird 4 – Green pheasant (*Phasianus versicolor*) by Benji Asada,
woodblock print, 450 x 295 mm



Endemic bird 5 – Japanese waxwing
(*Bombycilla japonica*) by Koson Ohara,
woodblock print, 190 x 380 mm



Endemic bird 6 – Japanese robin (*Erithacus akahige*) by Tōshi
Yoshida, woodblock print, 195 x 250 mm

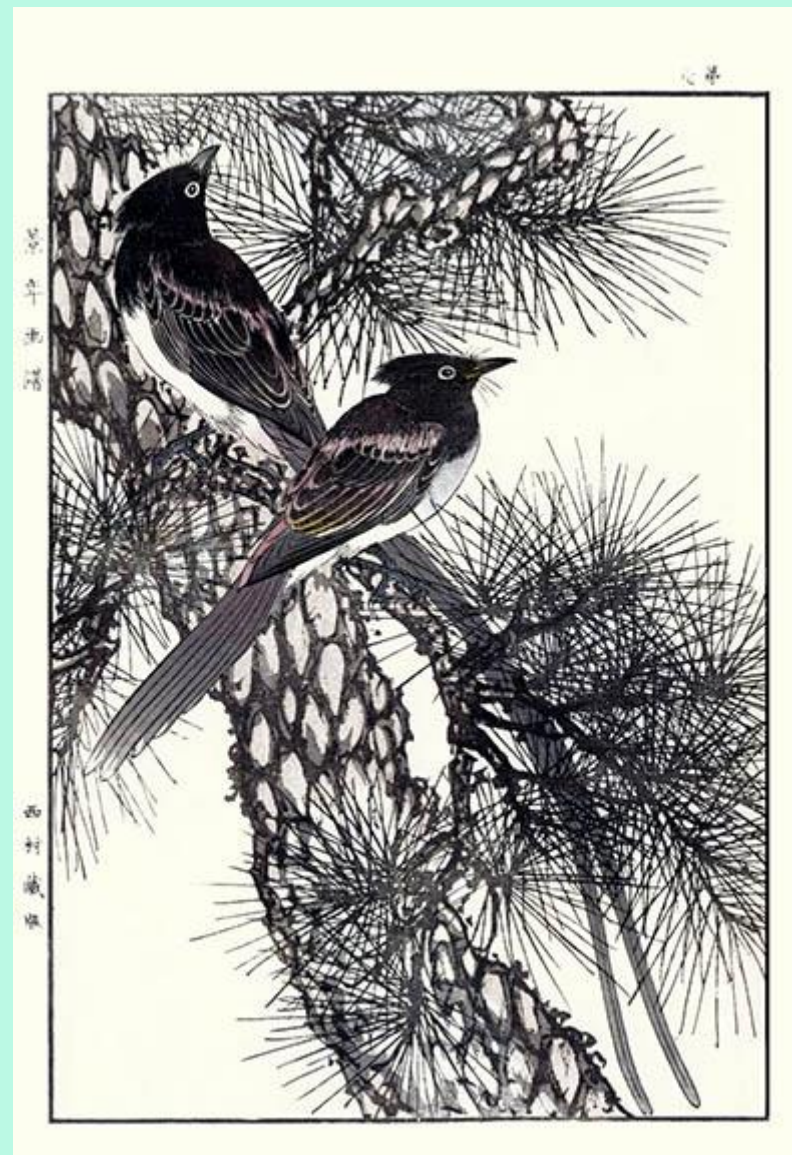


吉岡遠志

Endemic bird 7 – Japanese grosbeak (*Eophona personata*) by Rakusan Tsuchiya, woodblock print, 590 x 455 mm



Endemic bird 8 – Japanese paradise-flycatcher (*Terpsiphone atrocaudata*) by Keinen Imao, woodblock print, 250 x 370 mm



Endemic bird 9 – Copper pheasant (*Syrmaticus soemmerringii*) by Koson Ohara, woodblock print, 95 x 145 mm



Endemic bird 10 – Japanese thrush (*Turdus cardis*) by Keinen Imao, woodblock print, 250 x 370 mm



Exotic plant 1 – Plum (*Prunus mume*) by Keibun Matsumura, woodblock print, 130 x 190 mm



Exotic plant 2 – Florist's chrysanthemum (*Chrysanthemum grandiflorum*) by Kunisada II Utagawa, 300 x 225 mm



Exotic plant 3 – Tree peony (*Paeonia suffruticosa*) by Koson Ohara, woodblock print, 260 x 385 mm



Exotic plant 4 – China rose (*Rosa chinensis*) by Hiroshige Utagawa, woodblock print, 270 x 270 mm



Exotic plant 5 – Peach (*Prunus persica*) by Shizuo Ashikaga, woodblock print, 125 x 195 mm



Exotic plant 6 – Hall crabapple (*Malus halliana*) by Seisai Itō, woodblock print, 165 x 245 mm



Exotic plant 7 – Japanese morning glory (*Ipomoea nil*)
by Bairei Kōno, woodblock print, 245 x 370 mm



Exotic plant 8 – Pomegranate (*Punica granatum*) by
Sūgakudō Nakayama, woodblock print, 245 x 385 mm



Exotic plant 9 – Japanese persimmon (*Diospyros kaki*) by Gessō Yoshimoto, woodblock print, 125 x 245 mm



Exotic plant 10 – Bunchflower daffodil (*Narcissus tazetta*) by Bairei Kōno, woodblock print, 245 x 370 mm



Exotic bird 1 – Domestic fowl (*Gallus gallus*) by Bihō Takahashi, woodblock print, 90 x 140 mm



Exotic bird 2 – Java sparrow (*Padda oryzivora*) by Koson Ohara, woodblock print, 75 x 105 mm



Exotic bird 3 – Blue magpie (*Urocissa erythrorhyncha*) by Hiroshige Utagawa, woodblock print, 175 x 390 mm



Exotic bird 4 – Rock dove (*Columba livia*) by Koson Ohara, woodblock print, 190 x 370 mm



Exotic bird 5 – Canary (*Serinus canaria*) by Hodō Nishimura, woodblock print, 270 x 395 mm



Exotic bird 6 – Green peafowl (*Pavo muticus*) by Koson Ohara, woodblock print, 190 x 340 mm



Exotic bird 7 – Golden pheasant (*Chrysolophus pictus*) by Hodō Nishimura, woodblock print, 275 x 410 mm



Exotic bird 8 – Domestic goose (*Anser cygnoides*) by Soseki Komori, woodblock print, 215 x 385 mm



Exotic bird 9 – Black bulbul
(*Hypsipetes leucocephalus*) by
Suiun Komuro, woodblock print,
370 x 270 mm



Exotic bird 10 – Silver pheasant
(*Lophura nycthemera*) by
Masayoshi Kitao, woodblock
print, 380 x 245 mm

